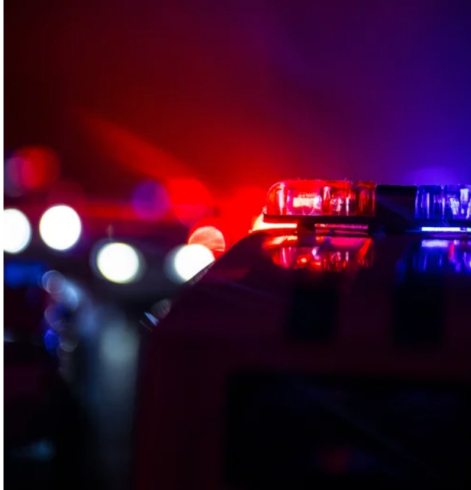


## Police Facts



### Losing Local Police Has Consequences

Keeping Reno's police force ensures safety, faster emergency response, and stronger crime prevention. Without it, Reno becomes just another rural stop on the county's patrol route—without priority or protection.

## Police Disincorporation Facts to Consider

### Increased Response Times

Parker County Sherrif Authier said response times would be slower; These could be anywhere **from 4 to 30+ minutes slower**, time you can't afford in a life-threatening emergency. [1, 4, 5, 6]

Reno PD's response time for life and death calls (person with weapon, etc.) is **5 1/2 minutes**. Parker County is **9 1/2 minutes**. That's time you do not have! [2, 5, 6]

**Parker County will not assign a deputy specifically to Reno**, per Sheriff Authier in the Town Hall Meeting. [1, 6]

Deputy response times will all depend on where they are located **throughout the 910 square mile county** at the time of the call. [2,6]

Watch [Sergeant Gonzalez's report video](#).

### Loss of Patrol Visibility = Increased Crime

Reno's **police force** typically has had **two officers on duty** to cover our city's 12.9 square miles. Parker County has 7-8 on-duty deputies covering 910 sq. miles of the County. [2]

**In Reno**, officers cover **6-12 sq miles each**. **In Parker County**, deputies must cover from **56-113 sq miles each**. [2]

**Visible police presence is shown to decrease crime by**

**20%.** (Gordon, 2025) Losing our police force means much less visibility. Reno police drive past your house at least once each night most nights. Losing this city police presence will put you at an **increased risk for crime**. [3]

*Briar is an example of what can easily happen in Reno if we disincorporate. Read the [Tri County Reporter story on Briar's Demise](#).* (Article starts midway on front page.)

## No Dedicated Community Policing

Reno's police **know the community**—they recognize residents, patrol high-risk areas, and respond based on local knowledge.

Sheriff's deputies rotate across **910 square miles**, meaning **no consistent patrol presence** and less familiarity with local concerns. [5]

Community policing **reduces crime and improves trust**—losing it makes Reno more vulnerable.

**Traffic & Public Safety Concerns:** Without dedicated officers enforcing traffic laws, **speeding, reckless driving, and DUIs will likely increase**. Reno Police completed multiple DUI stops and 1,171 traffic stops in 2024. [2, 4, 6]

Longer accident response times will put drivers and pedestrians at greater risk, potentially leading to more severe injuries or fatalities.

**More Unsolved "Lesser" Crimes:** Smaller thefts and vandalism might be called “lesser” crimes, but when it happens to you, it's not a little thing.

A city police force is generally better positioned to solve smaller theft crimes and vandalism due to its local knowledge, consistent presence, and ability to allocate resources specifically to these issues.

## Sources:

[1] Town Hall Meeting at Reno Elementary, September 5, 2024.

[2] Sergeant Gonzalez's Report, March 21, 2025.  
[https://www.youtube.com/watch?v=9ZiDIH6ohqA&ab\\_channel=SaveRenoPC](https://www.youtube.com/watch?v=9ZiDIH6ohqA&ab_channel=SaveRenoPC)

*(County response times are across the entire county. Reno is located in the farthest NE corner of Parker County; response times would be expected to be longer than average for this greater distance.)*

[3] <https://www.thebluemagazine.com/columnist-upload-here/2025/1/6/indispensable-police-command-presence>.

[4] Per Interim Police Chief Edgar Gonzalez, March 17, 2025.

[5] <https://tricityreporter.com/stories/to-be-reno-or-not-to-be-reno,47258>

[6] Official County Dispatch for Reno PD via Open Records Request. PDF downloadable at [https://saverenopc.com/wp-content/uploads/2025/03/2024-YEAR-END-STATS-RPD\\_EventsByNatureAgcy-1.pdf](https://saverenopc.com/wp-content/uploads/2025/03/2024-YEAR-END-STATS-RPD_EventsByNatureAgcy-1.pdf)

# Vote Against Disincorporation on May 3.

## Early Voting - April 22-29

Register to Vote Before April 3.

Can I vote **AGAINST** disincorporation but **FOR** the tax reduction?

YES! The most important thing is to keep your voice and local control by saving the City of Reno.

### CONTACT

✉ [info@saverenopc.com](mailto:info@saverenopc.com)  
☎ (817) 203-4837

We adhere to strict financial reporting standards, ensuring transparency and accountability in all our donations and expenditures

Donate



### QUICK LINKS

Water  
Roads  
Zoning  
Fire Protection  
Police Protection  
Taxes  
Fact Checks  
Reno's Future Opportunities  
About Us  
Updates  
Financial Disclosures

### VOTE AGAINST DISINCORPORATING RENO

Paid for by Save Reno PC, a registered Specific-Purpose Political Committee formed by local Reno residents.

Privacy Policy  
Terms of Service

